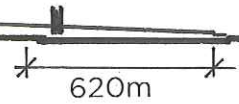


gradient of sightline rising at 1:27 (i.e. 620 divided by 23)

Westminster Palace
central ridge level
31.5mAOD

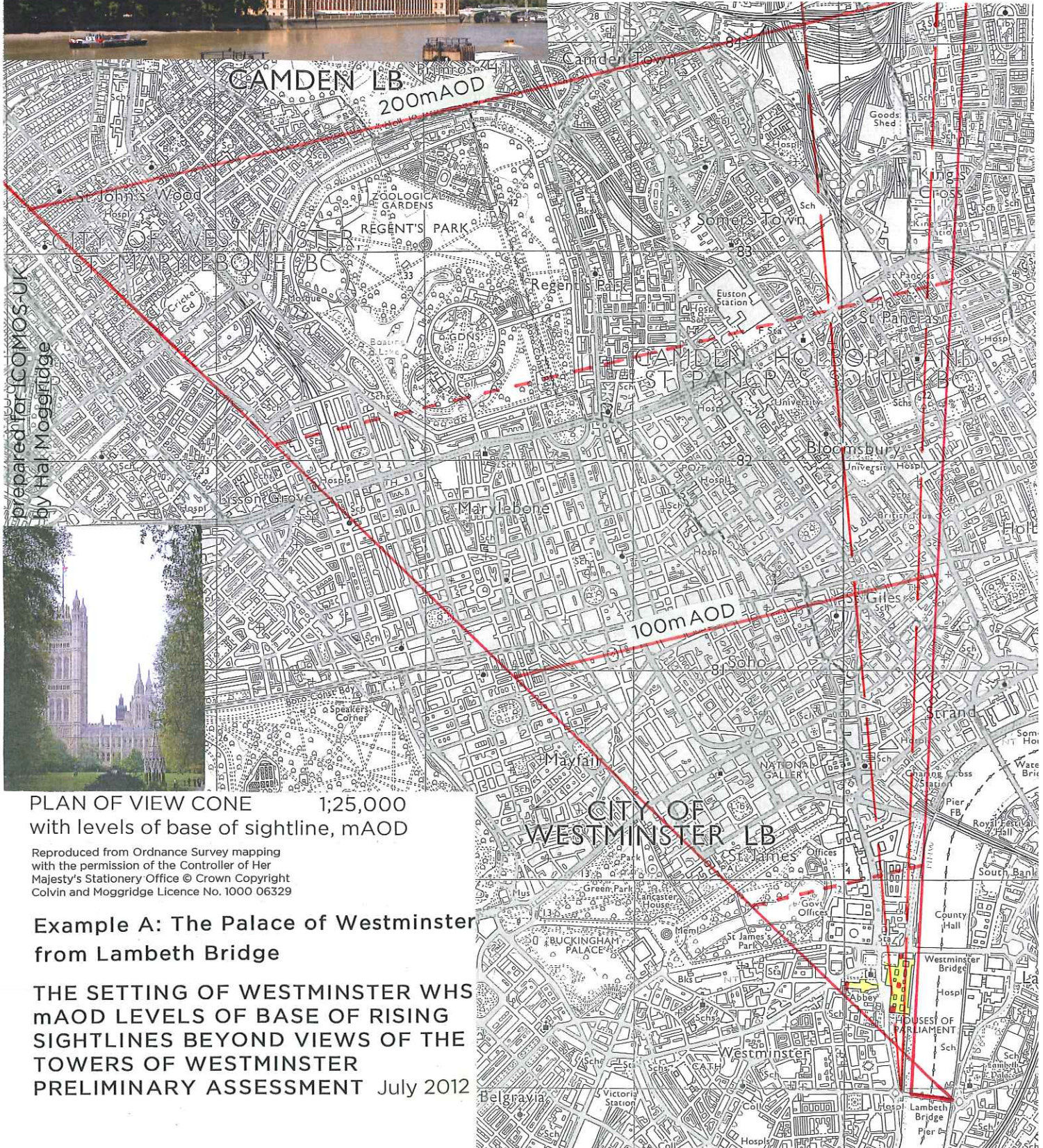
horizontal lines every 50mAOD
SECTION THROUGH RISING SIGHTLINE

1:25,000



Lambeth Bridge
towards east end
eye level 8.5mAOD

Note: The view from the
west end of the bridge
past Victoria Tower has
a steeper sightline



prepared for ICOMOS-UK
by Hal Moggridge



PLAN OF VIEW CONE 1:25,000
with levels of base of sightline, mAOD

Reproduced from Ordnance Survey mapping
with the permission of the Controller of Her
Majesty's Stationery Office © Crown Copyright
Colvin and Moggridge Licence No. 1000 06329

Example A: The Palace of Westminster from Lambeth Bridge

THE SETTING OF WESTMINSTER WHS
mAOD LEVELS OF BASE OF RISING
SIGHTLINES BEYOND VIEWS OF THE
TOWERS OF WESTMINSTER
PRELIMINARY ASSESSMENT July 2012

due W 1:12.5 (i.e. 280 divided by 22.5)
 gradient of sightlines rising to SW 1:17 (i.e. 380 divided by 22.5)

Westminster Palace
 side ridge level
 29m AOD

horizontal lines every 50m AOD
 SECTION THROUGH RISING SIGHTLINE

1:25,000

280m to W
 380m to SW

Albert
 Embankment
 eye level
 6.5m AOD



Photograph 9
 for ICOMOS-UK
 by Gavin Kingcome

prepared for ICOMOS-UK
 by Hal Moggridge



Reproduced from Ordnance Survey mapping
 with the permission of the Controller of Her
 Majesty's Stationery Office © Crown Copyright
 Colvin and Moggridge Licence No. 1000 06329

PLAN OF VIEW CONE 1:25,000
 with levels of base of sightline, m AOD

Example B: The Palace of Westminster
 from Albert Embankment

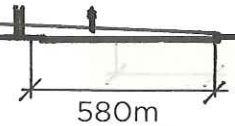
THE SETTING OF WESTMINSTER WHS
 MAOD LEVELS OF BASE OF RISING
 SIGHTLINES BEYOND VIEWS OF THE
 TOWERS OF WESTMINSTER
 PRELIMINARY ASSESSMENT July 2012

Westminster Palace
side ridge level
29mAOD

gradient of sightlines rising from S of eye at 1:26 (i.e. 580 divided by 22.5)

horizontal lines every 50mAOD
SECTION THROUGH RISING SIGHTLINE

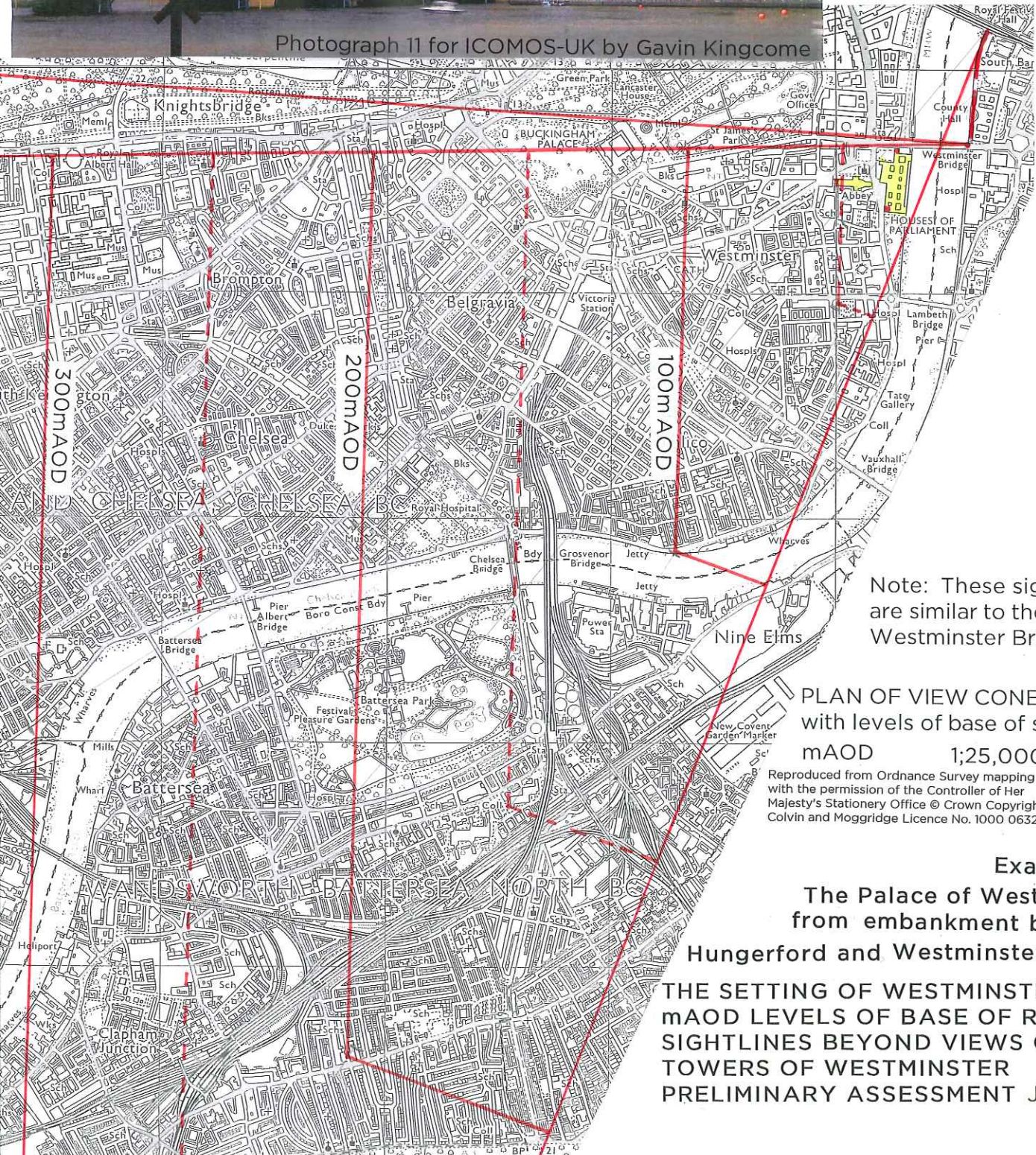
1:25,000



Embankment eye level
6.5mAOD



Photograph 11 for ICOMOS-UK by Gavin Kingcome



prepared for ICOMOS-UK
by Hal Moggridge

Note: These sightlines
are similar to those from
Westminster Bridge

PLAN OF VIEW CONE
with levels of base of sightline,
mAOD 1:25,000

Reproduced from Ordnance Survey mapping
with the permission of the Controller of Her
Majesty's Stationery Office © Crown Copyright
Colvin and Moggridge Licence No. 1000 06329

Example C:
**The Palace of Westminster
from embankment between
Hungerford and Westminster Bridge**
**THE SETTING OF WESTMINSTER WHS
mAOD LEVELS OF BASE OF RISING
SIGHTLINES BEYOND VIEWS OF THE
TOWERS OF WESTMINSTER
PRELIMINARY ASSESSMENT July 2012**

gradient of sightline rising at 1:24 (i.e. 650 divided by 27)

Westminster Palace
highest ridge level
41m AOD

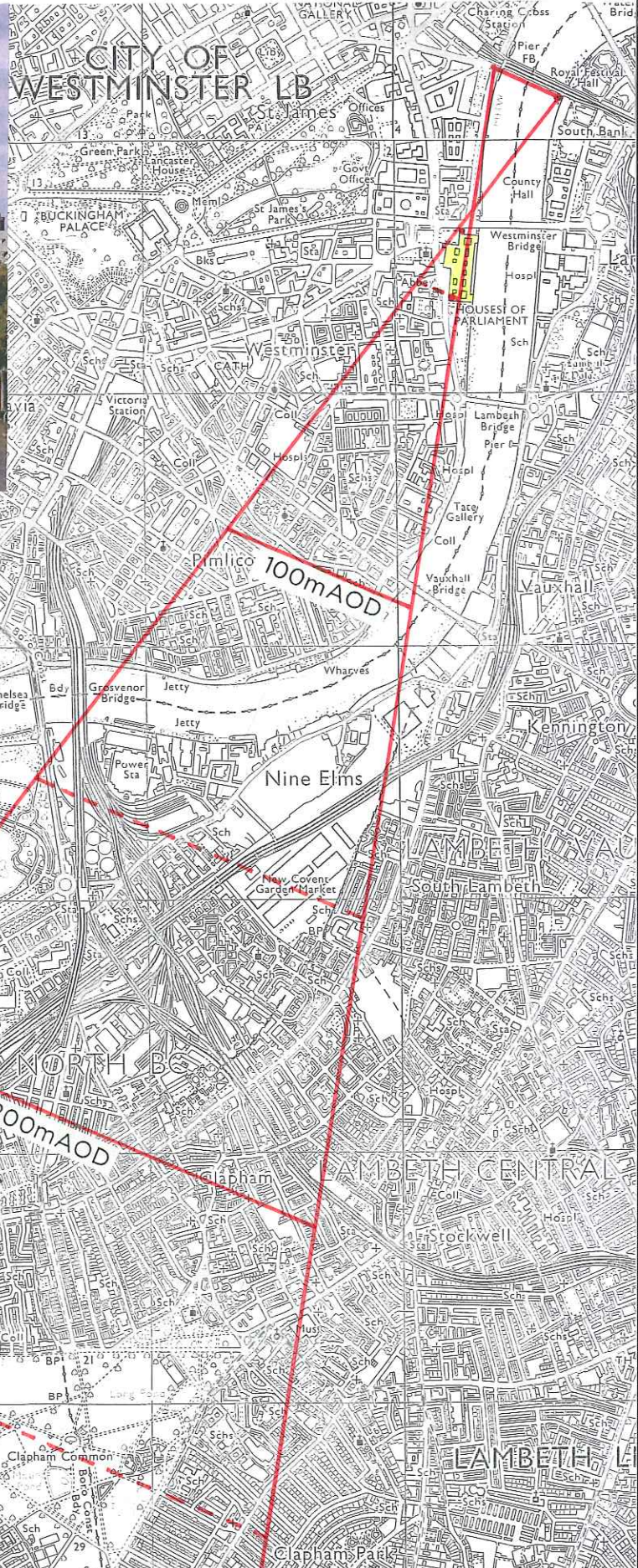
Footbridge
eye level
14m AOD

horizontal lines every 50m AOD
SECTION THROUGH RISING SIGHTLINE

1:25,000



Photograph 13 for ICOMOS-UK by Gavin Kingcome



Note: As the Palace roof silhouette is less important than Victoria Tower and Big Ben from the raised footbridge the high ridge level of the riverside pavilions has been selected as the bottom of the open sky

PLAN OF VIEW CONE 1:25,000
with levels of base of sightline, m AOD

Reproduced from Ordnance Survey mapping with the permission of the Controller of Her Majesty's Stationery Office © Crown Copyright Colvin and Moggridge Licence No. 1000 06329

Example D: Victoria Tower and Big Ben from Hungerford footbridge

THE SETTING OF WESTMINSTER WHS
m AOD LEVELS OF BASE OF RISING
SIGHTLINES BEYOND VIEWS OF THE
TOWERS OF WESTMINSTER
PRELIMINARY ASSESSMENT July 2012

prepared for ICOMOS-UK
by Hal Moggridge

gradient of sightline rising at 1:13.5 (i.e. 300 divided by 22)

Sky over tree canopy
beside Abbey towers
dropping to
30mAOD

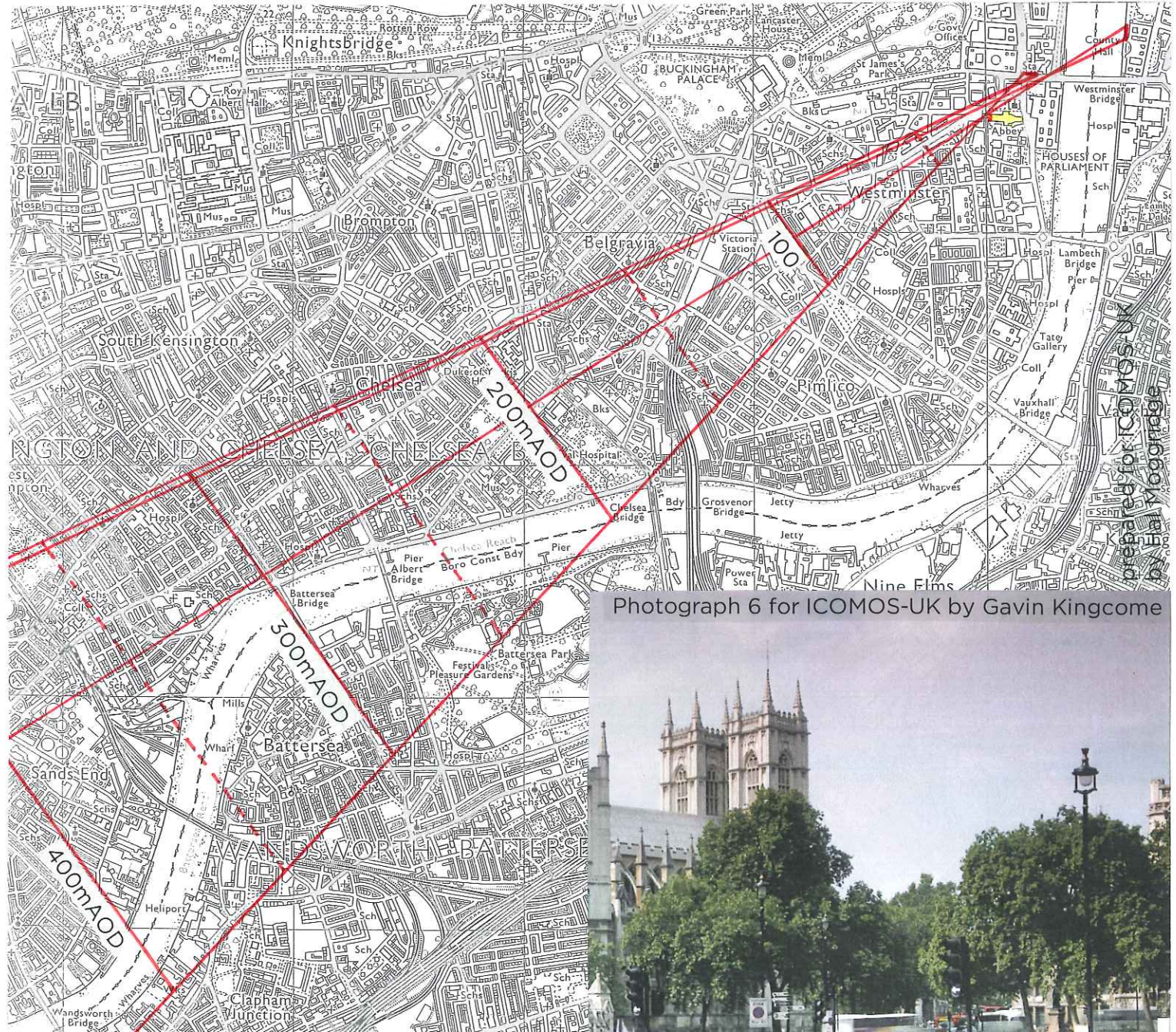
Viewpoint
at NE corner
of Parliament Square
eye level: 8mAOD

horizontal lines every 50mAOD
SECTION THROUGH RISING SIGHTLINE

1:25,000

300m

Note: This open sky is also
valuable to the framed view of
the Abbey towers across the
Thames, shown on Example C



Photograph 6 for ICOMOS-UK by Gavin Kingcome



PLAN OF VIEW CONE 1:25,000
with levels of base of sightline, mAOD

Example E: Open view past Westminster Abbey towers
over tree canopy from NE corner of Parliament Square
THE SETTING OF WESTMINSTER WHS
mAOD LEVELS OF BASE OF RISING
SIGHTLINES BEYOND VIEWS OF THE
TOWERS OF WESTMINSTER
PRELIMINARY ASSESSMENT July 2012

Viewpoint
north of Abbey
eye level 7m AOD

Bottom of open sky
beside Big Ben
20m AOD

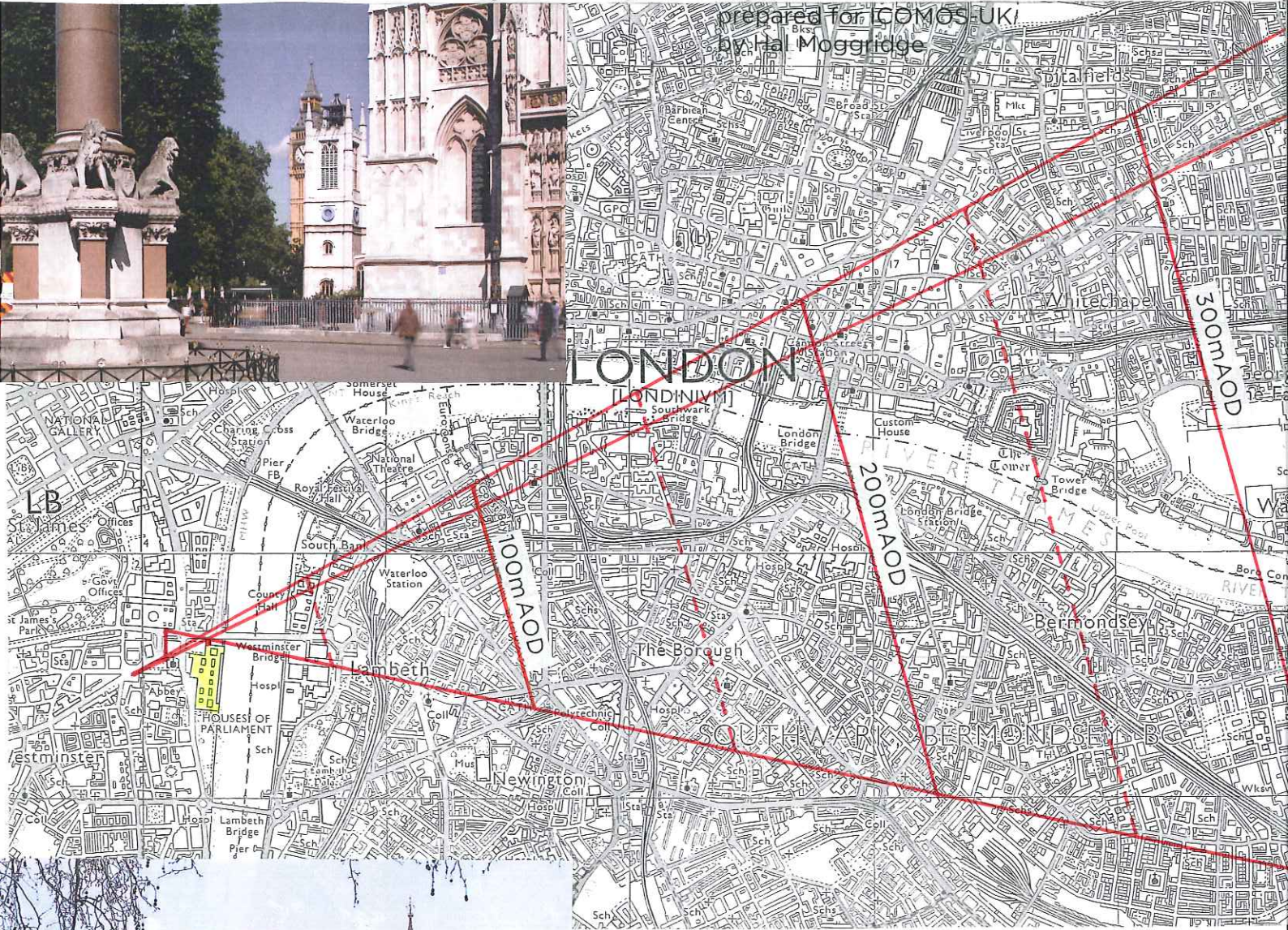
gradient of sightline rising at 1:15 (i.e. 195 divided by 13)

195m

1:25,000

horizontal lines every 50m AOD
SECTION THROUGH RISING SIGHTLINE

Photographs 2 & 4A for ICOMOS-UK by Gavin Kingcome



prepared for ICOMOS-UK
by Hal Moggridge

Reproduced from Ordnance Survey mapping
with the permission of the Controller of Her
Majesty's Stationery Office © Crown Copyright
Colvin and Moggridge Licence No. 1000 06329

PLAN OF VIEW CONE 1:25,000
with levels of base of sightline, m AOD



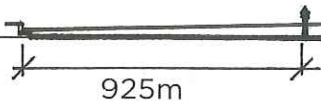
Example F: Open view past Big Ben from
Parliament Square and Westminster Abbey

THE SETTING OF WESTMINSTER WHS
m AOD LEVELS OF BASE OF RISING
SIGHTLINES BEYOND VIEWS OF THE
TOWERS OF WESTMINSTER
PRELIMINARY ASSESSMENT July 2012

National Gallery
portico
eye level 18.5mAOD

over roofs
39.5mAOD
at Big Ben

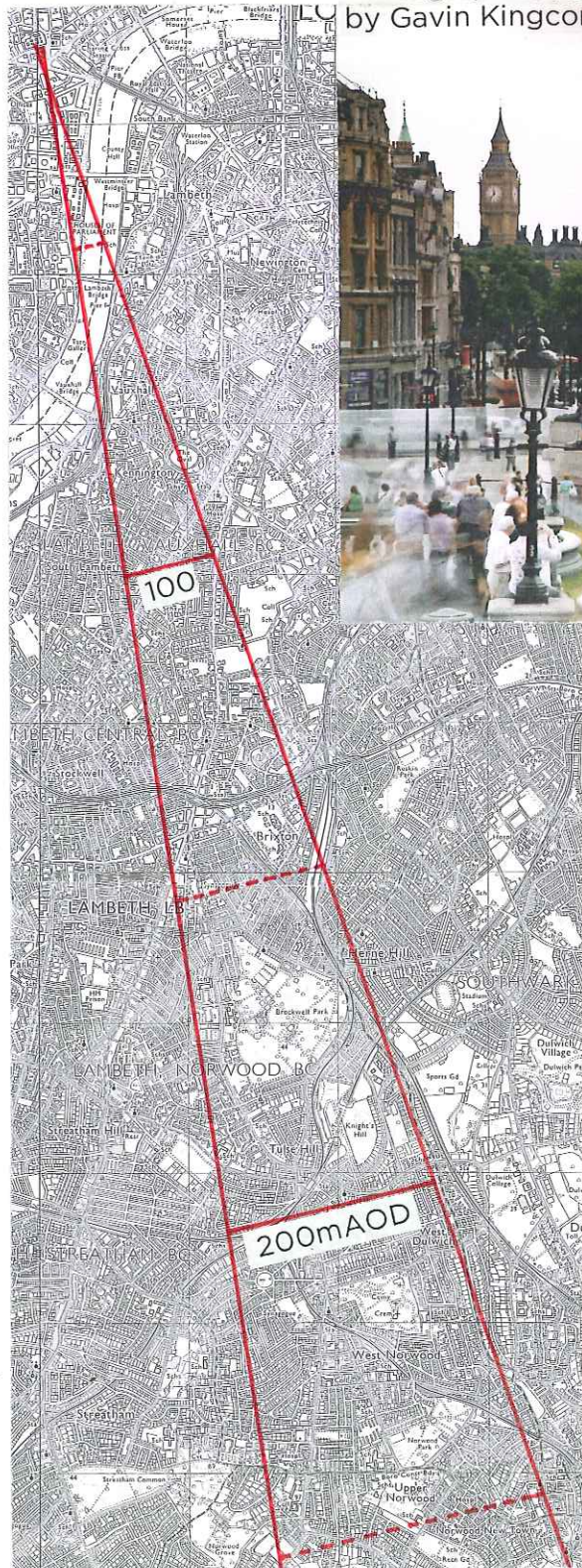
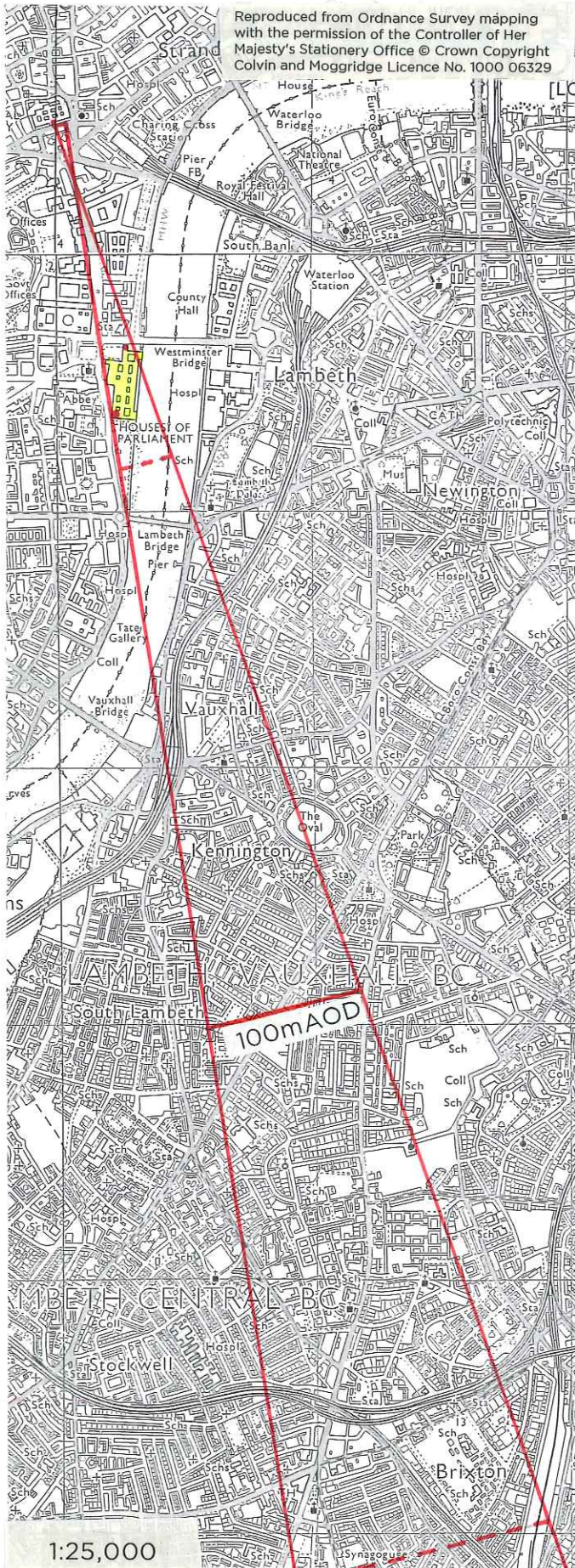
gradient of sightline rising at 1:44 (i.e. 925 divided by 21)



1:25,000

horizontal lines every 50mAOD
SECTION THROUGH RISING SIGHTLINE

Photograph 16 for ICOMOS-UK
by Gavin Kingcome



PLAN OF
VIEW CONE
with levels
of base
of sightline,
mAOD

1:50,000

prepared for
ICOMOS-UK
by Hal Moggridge

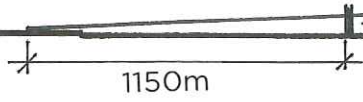
Example G: Big Ben and Victoria Tower
from the National Gallery

THE SETTING OF WESTMINSTER WHS
mAOD LEVELS OF BASE OF RISING
SIGHTLINES BEYOND VIEWS OF THE
TOWERS OF WESTMINSTER
PRELIMINARY ASSESSMENT July 2012

Viewpoint in NE corner of Waterloo Place eye level 13m AOD

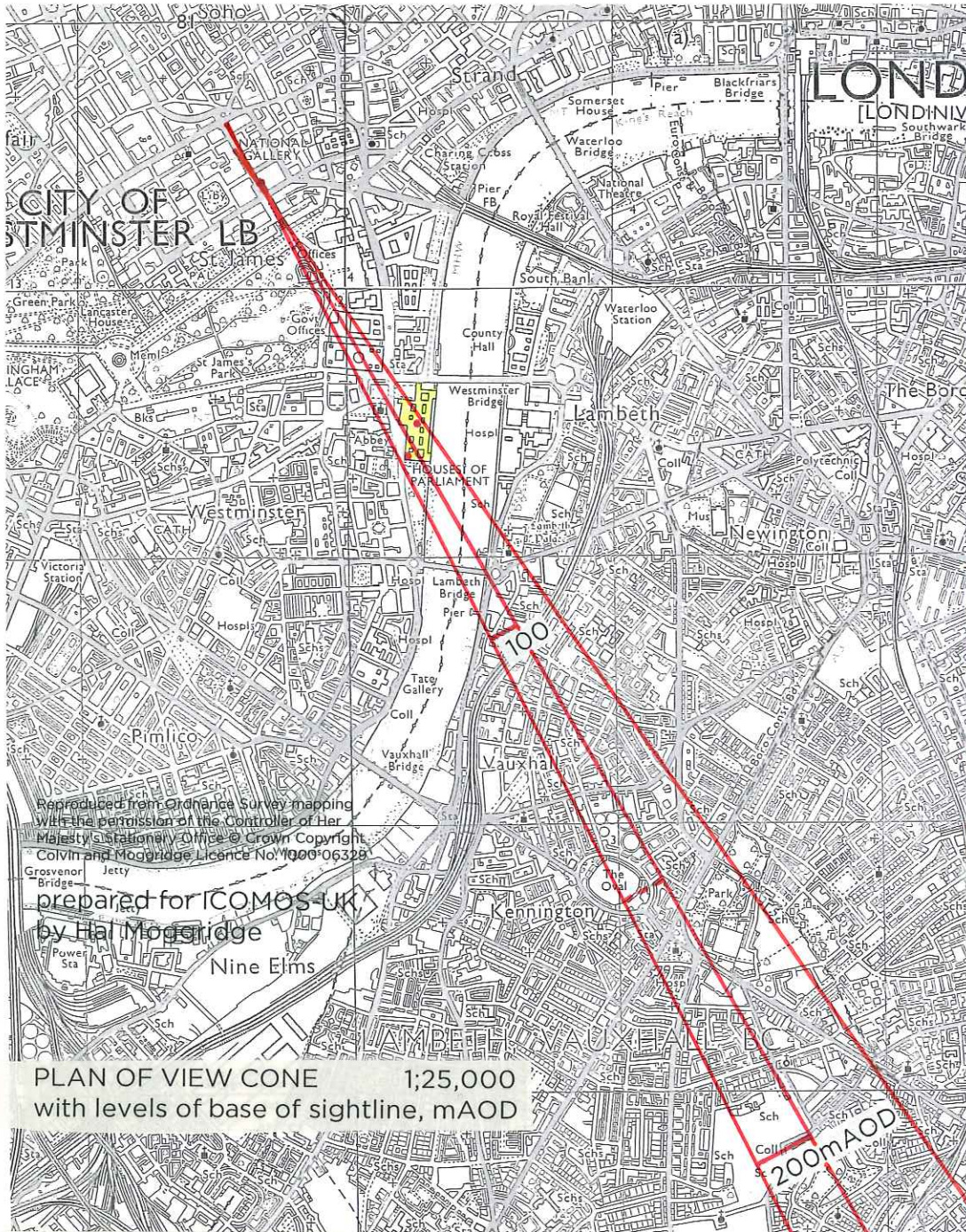
Upper windows of Victoria Tower 65m AOD

gradient of sightline rising at 1:22 (i.e. 1150 divided by 52)

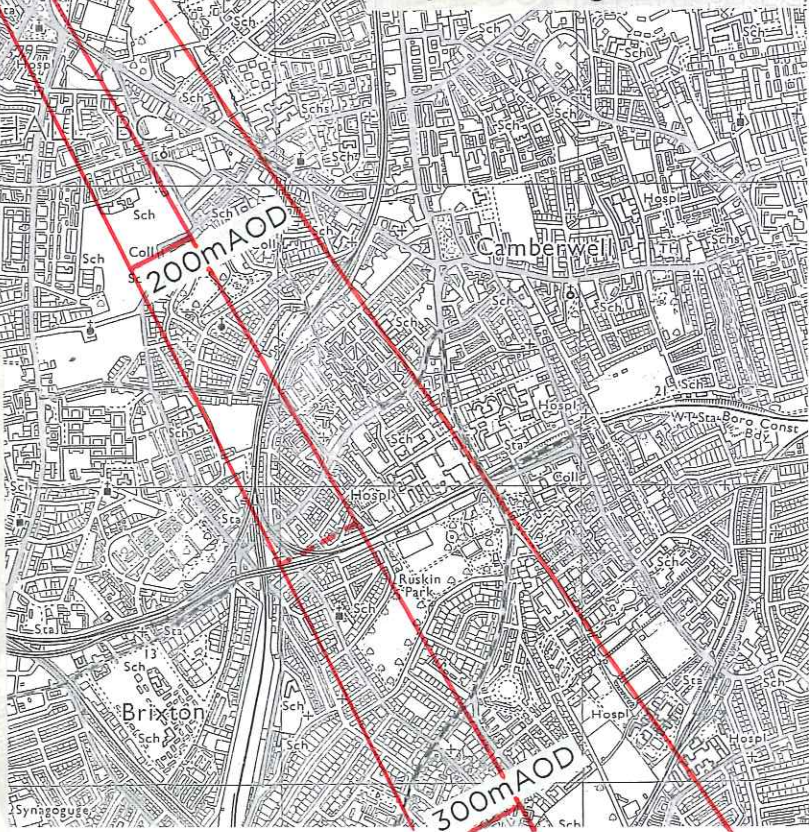


1:25,000

horizontal lines every 50m AOD
SECTION THROUGH RISING SIGHTLINE



Photograph 17 for ICOMOS-UK by Gavin Kingcome



Note: At Victoria Tower width of view cone taken to be 3 x width of the tower

Example H: Victoria Tower from Waterloo Place; also from Lower Regent Street where sight lines are flatter

THE SETTING OF WESTMINSTER WHS
mAOD LEVELS OF BASE OF RISING SIGHTLINES BEYOND VIEWS OF THE TOWERS OF WESTMINSTER
PRELIMINARY ASSESSMENT July 2012

Viewpoint on path
south of the Mall
eye level 7.5mAOD

Big Ben
below clock-face
49mAOD

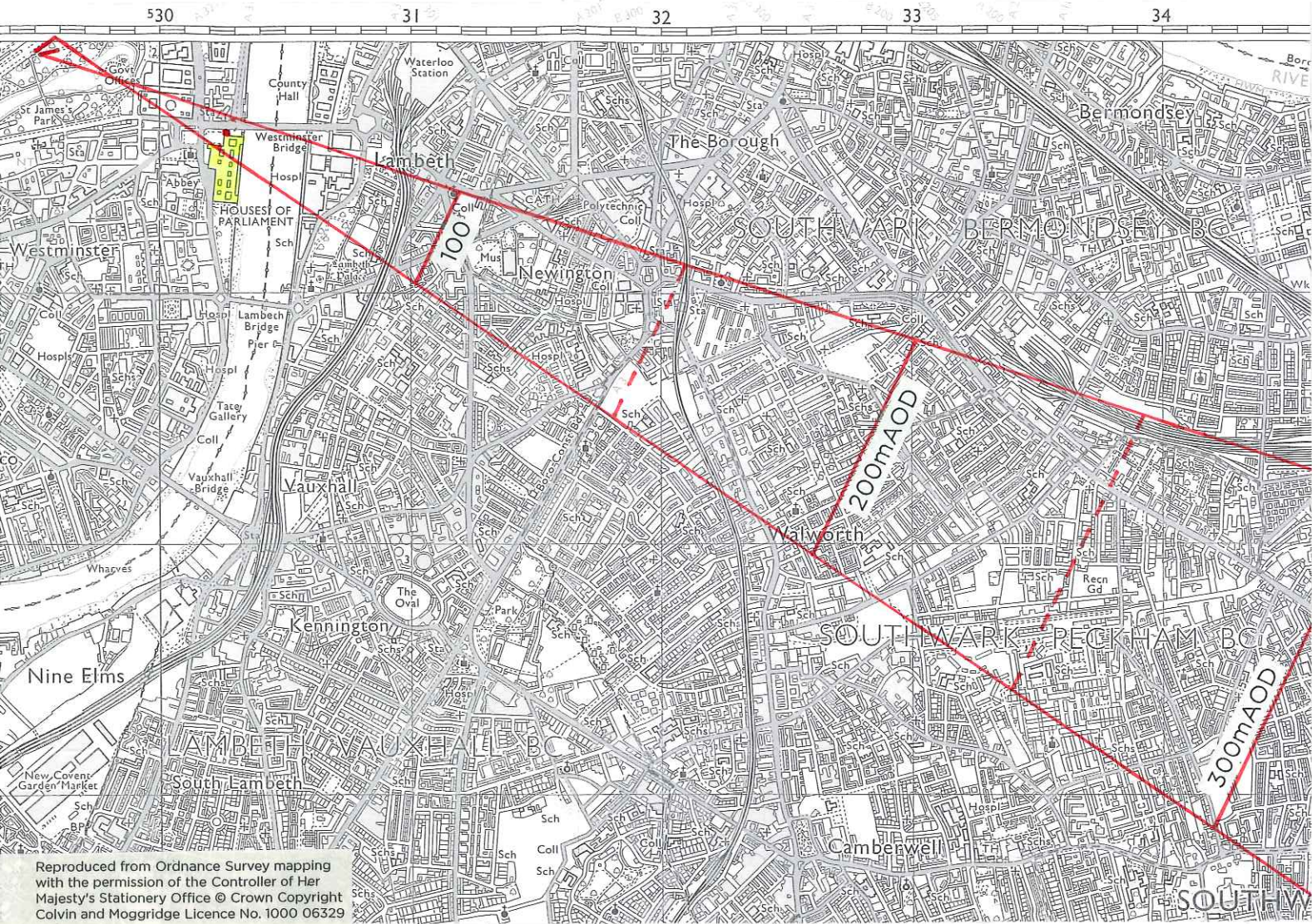
gradient of sightline rising at 1:19 (i.e. 780 divided by 41.5)



1:25,000

horizontal lines every 50mAOD
SECTION THROUGH RISING SIGHTLINE

prepared for ICOMOS-UK
by Hal Moggridge



PLAN OF VIEW CONE 1:25,000
with levels of base of sightline, mAOD

Photograph 20 for ICOMOS-UK
by Gavin Kingcome

Example J1: Big Ben
from Central Mall & St James's Park

THE SETTING OF WESTMINSTER WHS
mAOD LEVELS OF BASE OF RISING
SIGHTLINES BEYOND VIEWS OF THE
TOWERS OF WESTMINSTER
PRELIMINARY ASSESSMENT July 2012

Viewpoint
on The Mall
eye level 8mAOD

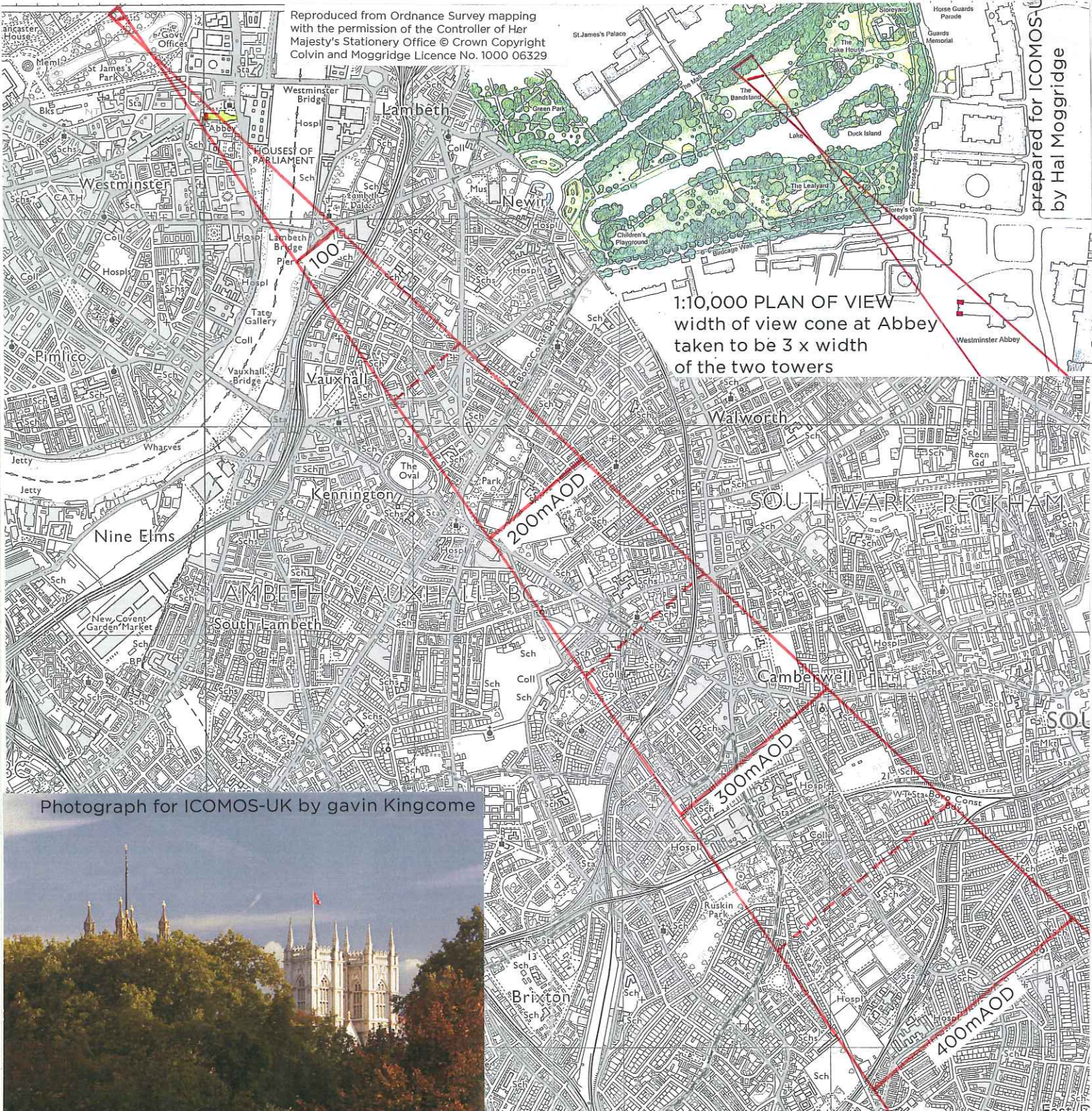
Westminster Abbey
ridge level
48mAOD

gradient of sightline rising at 1:16 (i.e. 640 divided by 40)



1:25,000

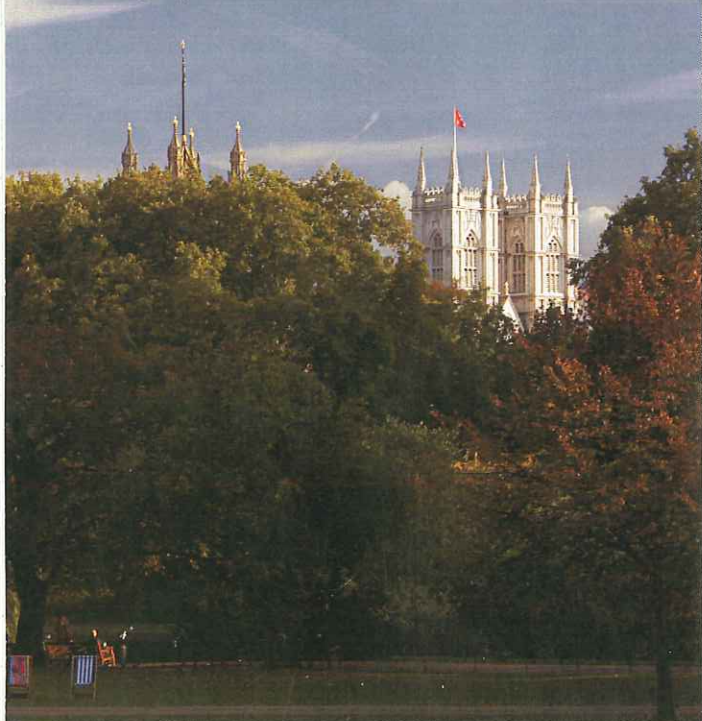
horizontal lines every 50mAOD
SECTION THROUGH RISING SIGHTLINE



Reproduced from Ordnance Survey mapping with the permission of the Controller of Her Majesty's Stationery Office © Crown Copyright Colvin and Moggridge Licence No. 1000 06329

1:10,000 PLAN OF VIEW
width of view cone at Abbey
taken to be 3 x width
of the two towers

Photograph for ICOMOS-UK by gavin Kingcome



PLAN OF VIEW CONE 1:25,000
with levels of base of sightline, mAOD

July 2012

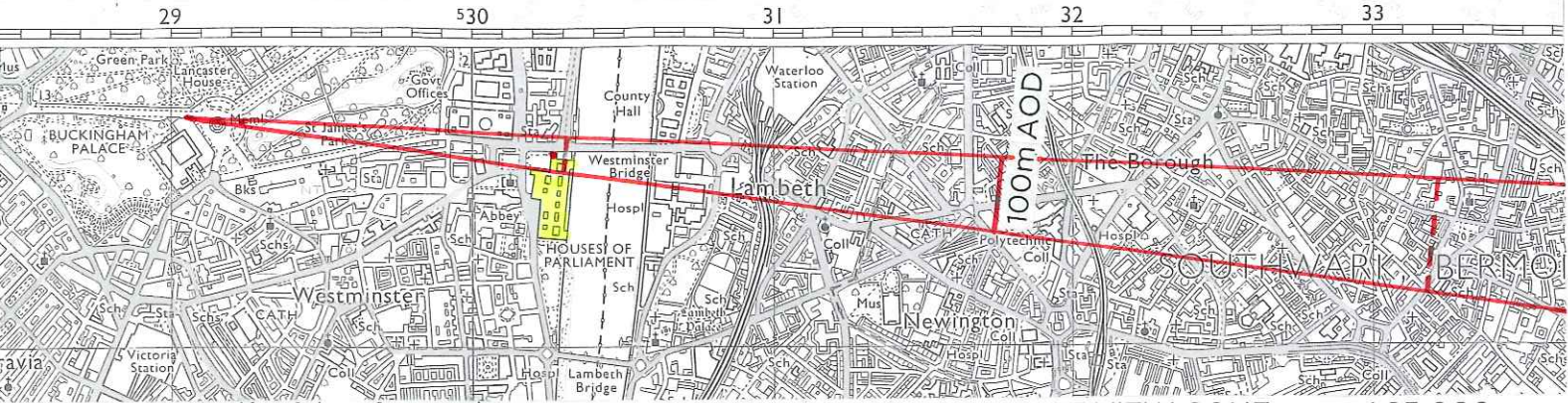
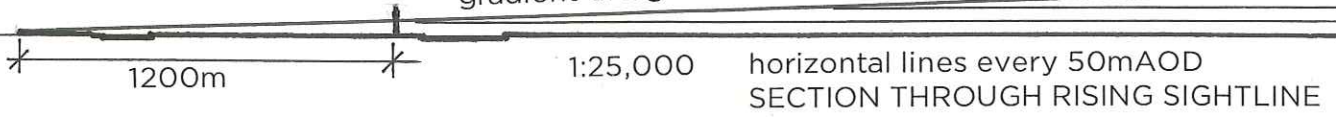
Example J2: Abbey Towers
from Central Mall & St James's Park

THE SETTING OF WESTMINSTER WHS
mAOD LEVELS OF BASE OF RISING SIGHTLINE
BEYOND VIEWS OF THE TOWERS OF WESTMINSTER

Viewpoint at bottom of Constitution Hill eye level 8mAOD

Big Ben below the clock-face 49mAOD

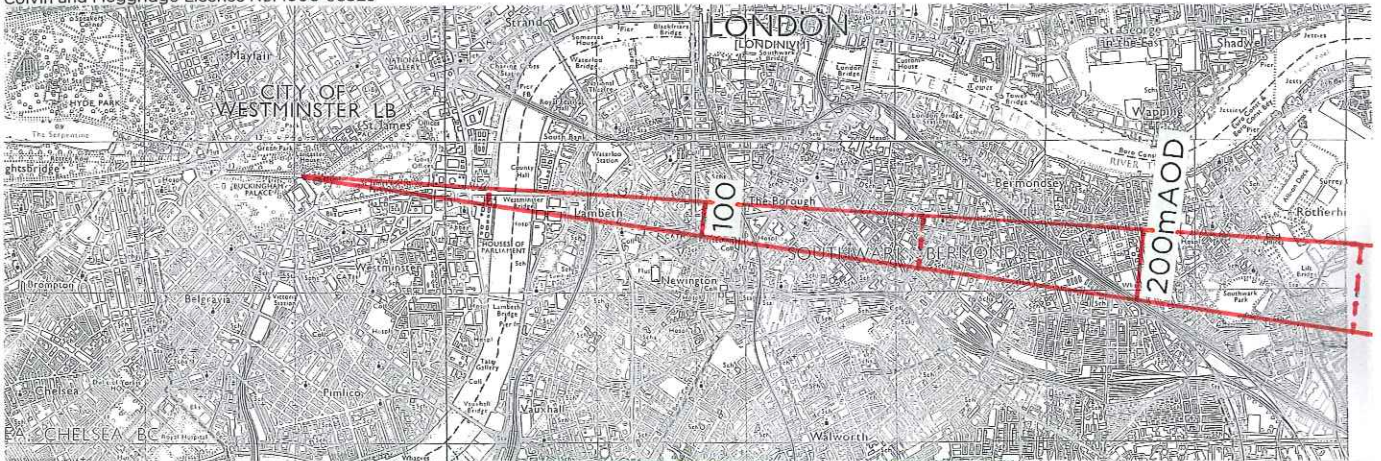
gradient of sightline rising at 1:29 (i.e. 1200 divided by 41)



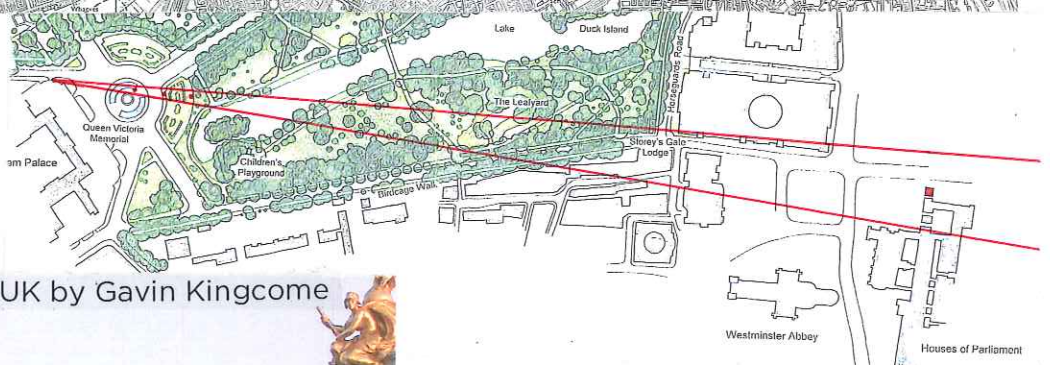
Reproduced from Ordnance Survey mapping with the permission of the Controller of Her Majesty's Stationery Office © Crown Copyright Colvin and Moggridge Licence No. 1000 06329

PLAN OF VIEW CONE 1:25,000 with levels of base of sightline, mAOD

prepared for ICOMOS-UK by Hal Moggridge



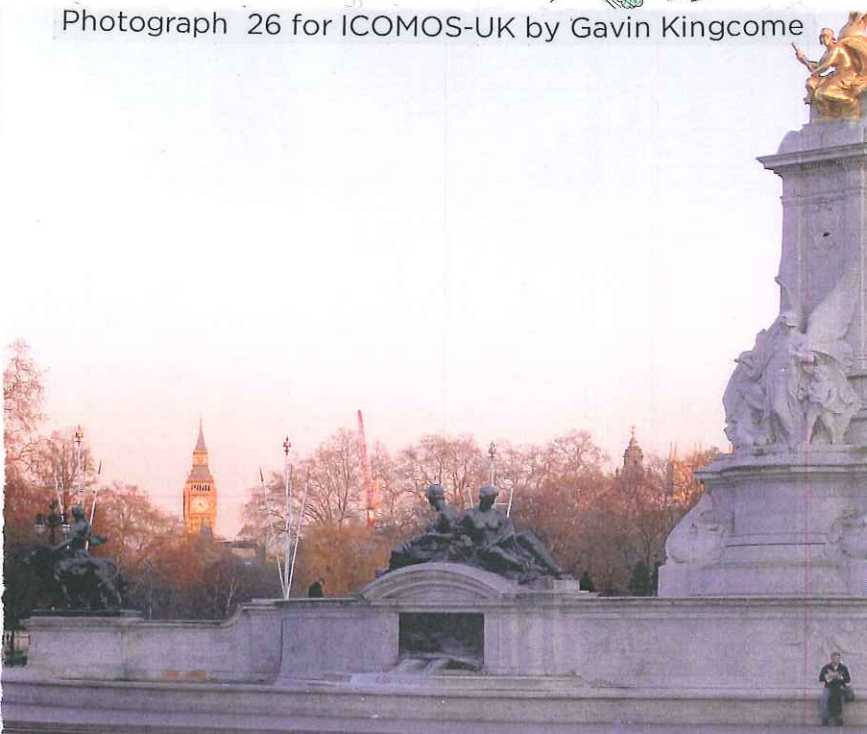
1:50,000



1:10,000 PLAN OF VIEW width of cone at Big Ben: 100m

Note: There are fine views of Big Ben from the bottom of Constitution Hill from the base of Queen Victoria Memorial and from the east balustrade

Photograph 26 for ICOMOS-UK by Gavin Kingcome



Example K: Big Ben from in front of Buckingham Palace

THE SETTING OF WESTMINSTER WHS
mAOD LEVELS OF BASE OF RISING SIGHTLINES BEYOND VIEWS OF THE TOWERS OF WESTMINSTER
PRELIMINARY ASSESSMENT July 2012

Serpentine Bridge
eye level
22.0m AOD

Base of Abbey
and Victoria Towers
48.5m AOD

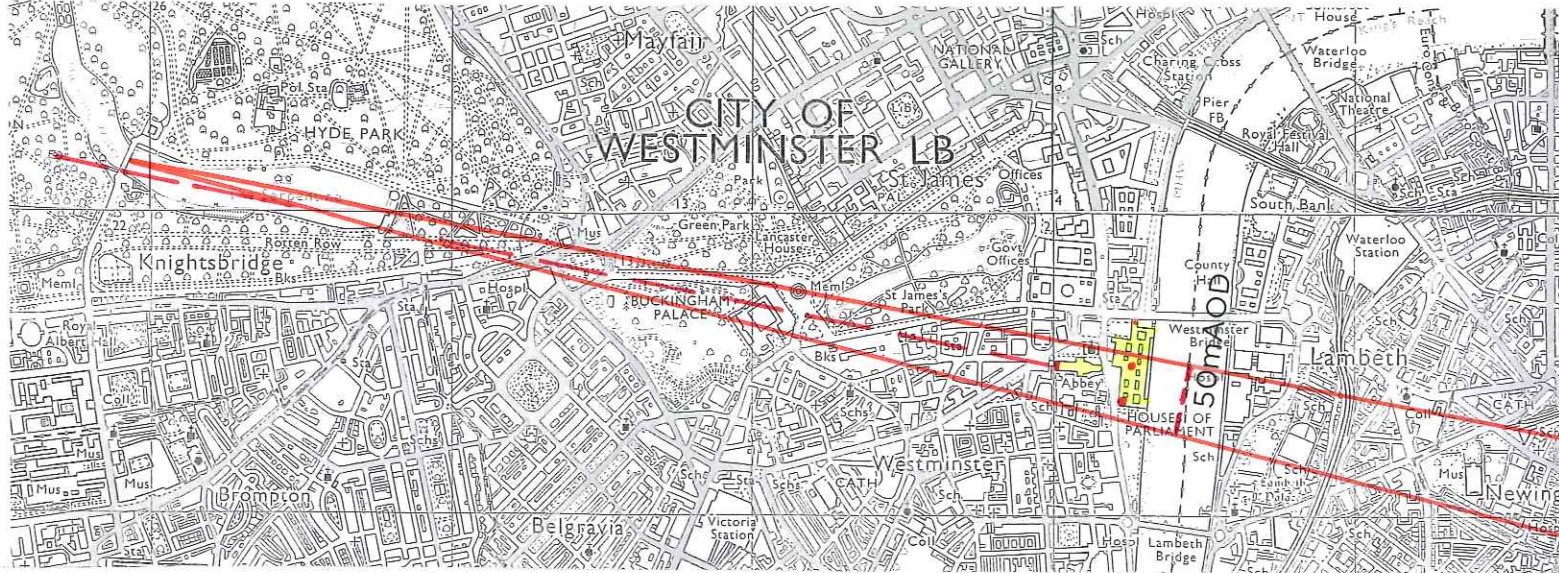
gradient of sight line rising at 1:128.4 (i.e. 3403 divided by 26.5)

3403m

SECTION THROUGH RISING SIGHTLINE

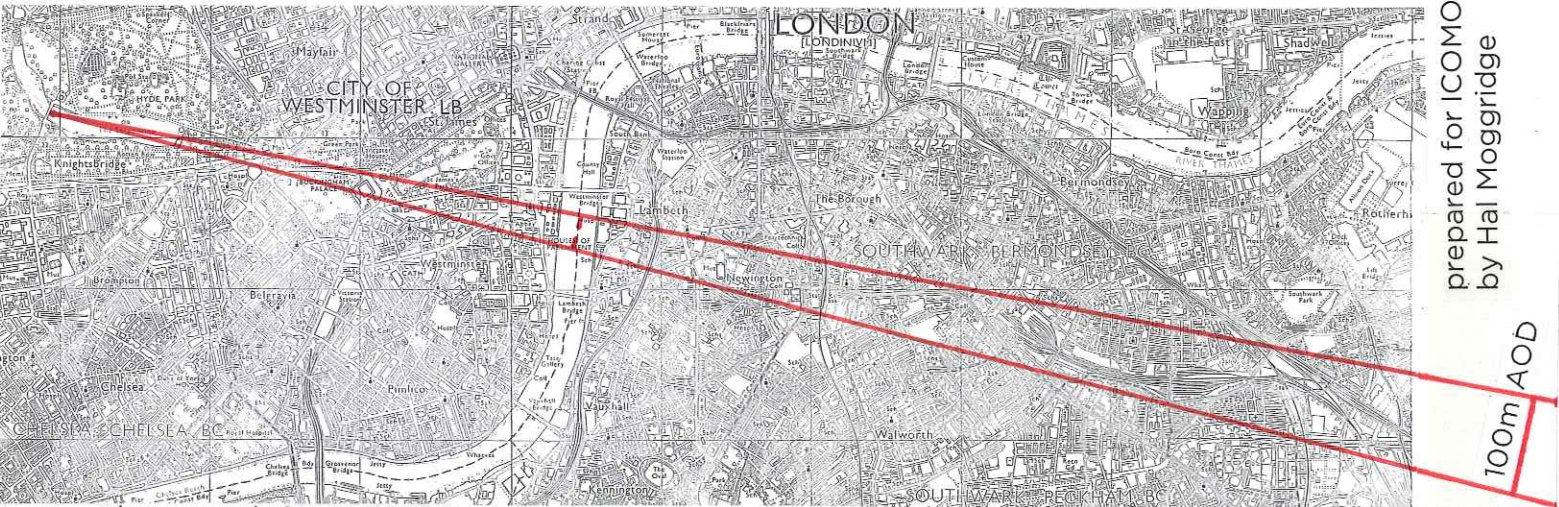
1:25,000

dashed line shows original view
of Abbey towers from Kent's pavilion,
after Serpentine was created in 1737



Reproduced from Ordnance Survey mapping
with the permission of the Controller of Her
Majesty's Stationery Office © Crown Copyright
Colvin and Moggridge Licence No. 1000 06329

PLAN OF VIEW CONE 1:25,000
with levels of base of sightline, mAOD



prepared for ICOMOS-UK
by Hal Moggridge

100m AOD

Photograph for ICOMOS-UK by Gavin Kingcome

1:50,000

This view cone extends
at a flat gradient
across S-E London



Note: View cone and dimensions
have been obtained from the
London View Management Framework,
Townscape View number 23

Example L: Abbey and Victoria
Towers from Serpentine Bridge

THE SETTING OF WESTMINSTER WHS
mAOD LEVELS OF BASE OF RISING
SIGHTLINES BEYOND VIEWS OF THE
TOWERS OF WESTMINSTER

July 2012